

PRODUCT CATALOGUE





About Us

Sinar Global Hygiene (SGH) was incorporated with the goal to be leaders in better hygiene solutions that are environmentally sustainable. With over 20 years of experience, we have become a well-established name within the industry servicing countless customers. Regardless of the nature of environment or requirement to be fulfilled, our customers can be rest assured that our sustainable hygiene methods cover all aspects of system cleaning practices and standard compliance.

At Sinar Global Hygiene, we offer a range of specialized services and solutions to cater to the demand of the robust and ever evolving cleaning industry through the supply of eco certified cleaning chemicals, high grade cleaning machineries and relevant related consumables.

Our dedication to provide honest, reliable and efficient hygiene services is strengthened by our commitment and investment in the latest equipment and environmentally friendly technology available in the market today.

All our employees are carefully selected and undergo specialized training before becoming certified technicians. As part of our business expansion plans, in 2018 the company introduced specialized services which extended to Nano Coating Technology, Certified Indoor Air Quality Control Services, Pest Control Services, Professional Cleaning Of Commercial Kitchen Hoods & Ducts, Dry Carpet Cleaning Technologies and Deep Hygiene Cleaning For Sanitization and Decontamination of commercial and domestic buildings alike. Let us be your trusted environmental hygiene specialists for a better tomorrow

Vission

To lead the way in specialized hygiene servicing. We take pride in our core values that honour and serve our customers. Our vision is to provide a wide range of specialized services and solutions that can not only meet but exceed the expectation of our customers to support the current hygiene requirement alongside the diversity of our nation's infrastructural needs.

Mission

- Provide innovative solutions for our clients that extend beyond traditional boundaries through quality products and services for performance and reliability
- Prioritize our employees by developing all our employees to achieve their full potential through providing an efficient, safe and satisfying work environment
- To comply with Ecological Objectives while delivering impeccable service

PRODUCT & SERVICES



Hygiene Cleaning Services



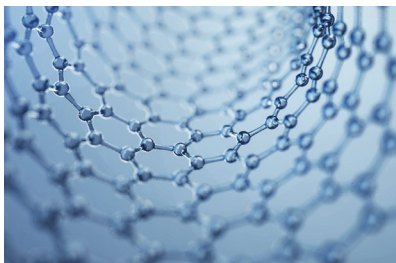
Environmentally Friendly Chemical



Sustainable System & Method



Technologically Advanced Machine



Effective Nano Technology



Stringent Contamination Control Situations

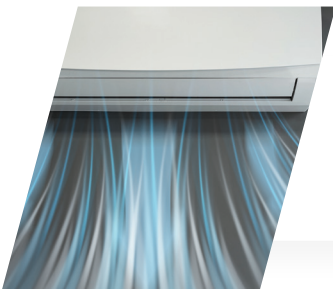
ENVIRONMENT HYGIENE CONTROL SYSTEM



Nano Coating



Dycem Mat



Indoor Air Quality



Specialised Cleaning



Duct Cleaning



Steam Cleaning



Cleaning Chemicals & Machines



Changing The Way You Think About Cleaning





I-MOP LITE

2 Year Warranty

The imop Lite is lighter than the i-mop XL, making it the smallest and lightest machine available in the i-mop range. By expanding its current range of i-mops, i-team is offering a tool with outstanding maneuverability and portability, making it perfect for mobile cleaning.

The imop Lite can go in even smaller spaces than its bigger brother, the i-mop XL. From the improved control panel to the new water overflow protection mechanism, everything is designed to make it even more user friendly.



FASTER



CLEANER



GREENER



SAFER



BETTER FOR EVERYONE

Technical Specifications	
Application	indoor, hard surfaces
Theoretical performance	1400 m ² per hour
Practical performance	700-1000m ² per hour
Brush speed	500 rpm
Brush pressure	13 kg
Operation width	37 cm
Size machine (L x W x H)	34 X 43 X 120 cm
Weight without battery & water	11.5kg
Clean water tank	4 L
Recovery tank	5 L
Material	PP, Aluminum alloy
Power-source	2 i-power 9 batteries or i-power 14*
Battery spec	i-power 9 : 24 V, 8.8Ah i-power 14 :25.2 V, 14 Ah
Run time	i-power 9 : 60-70 minutes i-power 14 : 90-100 minutes
Charger type	Off board*
Charger	110-240 V, 50/60 Hz

*Batteries & charger can be ordered separately



I-MOP XL 2 Year Warranty

The i-mop XL represents an opportunity for you to dramatically improve your cleaning and maintenance operations while saving you time and money.

As a heavy duty auto scrubber, the i-mop will clean floors faster, easier and with better results than you can achieve with traditional wet-mopping. With a 46cm scrub deck the i-mop XL can be used for small to medium spaces.



FASTER



CLEANER



GREENER



SAFER



BETTER FOR EVERYONE

Technical Specifications	
Application	indoor, hard surfaces only
Theoretical performance	Up to 1800 m ² per hour
Practical performance	1000-1300 m ² per hour
Brush speed	350 rpm
Brush pressure	22.5 kg
Operation width	46 cm
Size machine (L x W x H)	47.5 X 44 X 120 cm
Weight without battery & water	18.5 kg
Clean water tank	4 L
Recovery tank	5 L
Material	PP, Aluminum alloy
Power-source	2 i-power 9 batteries or i-power 14*
Battery spec	i-power 9 : 24 V, 8.8Ah i-power 14 : 25.2 V, 14 Ah
Run time	i-power 9 : 60-70 minutes i-power 14 : 90-100 minutes
Charger type	Off board*
Charger	110-240 V, 50/60 Hz

*Batteries & charger can be ordered separately



I-MOP XXL

2 Year Warranty

The i-mop is lightweight, easy to maneuver and will cover much more floor area than traditional wet-mopping in the same amount of time. The i-mop XXL allows the user to clean up to 2300m² in just an hour, flipping the script on how a larger auto scrubber should look, feel & handle.

You can approximately save 20% of your time compared to a conventional walk-behind auto scrubber with a floor size of 50 to 75cm by operating the i-mop XXL.



FASTER



CLEANER



GREENER



SAFER



BETTER FOR EVERYONE

Technical Specifications	
Application	indoor, hard surfaces only
Theoretical performance	Up to 2300 m ² per hour
Practical performance	1200-1800 m ² per hour
Brush speed	350 rpm
Brush pressure	32 kg
Operation width	62 cm
Size machine (L x W x H)	64.5 X 47 X 120 cm
Weight without battery & water	21 kg
Clean water tank	5 L
Recovery tank	6 L
Material	PP, Aluminum alloy
Power-source	2 i-power 14 batteries*
Battery spec	i-power 9 : 24 V, 8.8Ah i-power 14 :25.2 V, 14 Ah
Run time	i-power 9 : 50-60 minutes i-power 14 : 60-70 minutes
Charger type	Off board*
Charger	110-240 V, 50/60 Hz

*Batteries & charger can be ordered separately



Automatic power shut-off when parked prevented battery drainage

With i-mop Plus, raising the scrub deck into the Park position (during the workday or when the i-mop is stored overnight) will automatically shut off the battery to prevent its drainage and optimize battery life. Lower the deck to working position and the battery automatically switches back on



Say goodbye to splashing with automatic brush shut-off

With the new automatic battery shutoff, brushes stop rotating when the unit is put in upright (parked) position to wheel from one place to another. This prevent splashing against people walking by and undoing your cleaning . And even when i-mop is in working mode, splash guards on both sides of the deck prevent water from spreading

Optimizing The User Experience

Timer display

The i-mop Plus comes with additional features which makes it ideal for leasing contracts. The Plus and Pro version both have a sensor and timer integrated into the control panel. The timer displays shows how many running ours the i-mop has made in its lifespan. The timer can be used for leasing and maintenance purposes. You not know exactly when the i-mops needs maintenance or how many hours can be changed for using the i-mop

New control panel that's easier and more durable

All new i-mop include a re-designed control panel featuring a lower inlay and a bumper which prevent damage to the sides and make the machine easier to work with



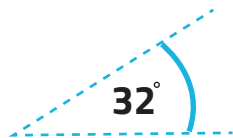
Now also clean facilities at swimming pools and beach areas

The i-mop Pro has a coating on the scrubber deck which protects the i-mop against salt & chloride



Angle switch prevents flooding motor with water

Many operators have a tendency to hold the i-mop below a 32-degree angle. This can cause the motor to flood. The new electronic angle switch on i-mop Plus automatically shuts down the motor when it's not held in the right position



Overflow Safety Valve automatically closes recovery tanks & stops extraction

There's a new floating ball valve in the recovery tank filter system of all new i-mops. This new feature (a) automatically closes the tank to prevent water from overflowing and (b) immediately stops the i-mop from extracting fluids from the floor

Recovery tank sensor shuts down i-mop when tank is full

In addition the i-mop Plus range includes a new recovery tank sensor that shuts down the i-mop completely when the tank is full

i-mop brushes



Soft brush

Optional
 XXL: K.2.S.72.1092.70
 XL: K.20.72.0092.70
 Lite: K.2.S.115.1054.70



Medium brush

Standard
 XXL: K.2.S.72.1092.797
 XL: K.2.S.72.0092.797
 Lite: K.2.S.115.1054.797



Hard brush

Optional
 XXL: K.2.S.72.1092.1
 XL: K.2.S.72.0092.1
 Lite: K.2.S.115.1054.1



Natural hair brush

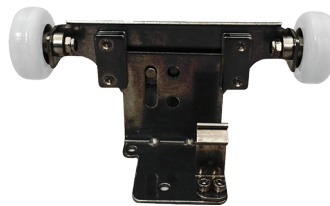
Optional
 XXL: K.2.S.72.1342.797
 XL: K.2.S.72.0342.797
 Lite: K.2.S.115.1054.592



Natural hair brush

Optional
 XXL: K.2.S.72.1342.797
 XL: K.2.S.72.0342.797
 Lite: K.2.S.115.1054.592

Squeegee blades



Scrub Bracket

Heavy duty brackets designed to lift the squeegee off the ground. Designed for deep scrubbing and stripping



Standard use

Linatex Squeegee Rubbers
 High quality standard squeegee rubbers.
 Durable and Chemical Resistant

XXL: K.1.S.72.1096.2
 XL: K.1.S.72.0096.2



For lights oily/greasy environments

Oil resistant Squeegee Rubbers
 Specially designed for longer life in very oily environments

XXL: K.1.S.72.1096.3
 XL: K.1.S.72.0096.3



For extreme oily/greasy environments

Primothane Squeegee Rubbers
 Ultimate high performance squeegee rubber. Highly durable. Oil & chemical resistant

K.1.S.72.0096.4



I-MATT

1 Year Warranty

i-matt is an extended duration, clean-in-place walk-off mat that vastly improves floor safety and ease of cleaning. i-mop's superior cleaning performance can be applied seamlessly to the i-matt. Adding i-protect HDD with aXonnite® to your cleaning protocol gets mats even cleaner and helps prevent recontamination to make future cleaning easier and faster.



FASTER



CLEANER



GREENER



SAFER



BETTER FOR EVERYONE

Technical Specifications

Total size (w x l)	91,15 × 900 cm
Size of 1 section (w x l)	91,15 × 300 cm



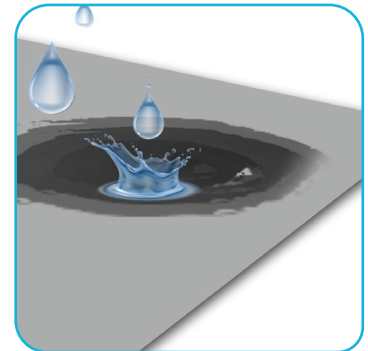
Easily cleaned by i-Mop

i-mop's superior cleaning performance can be applied seamlessly to the i-matt. Your mats are cleaned in place as frequently as your floors in the same operation



Easily cleaned by i-Mop

i-mop's superior cleaning performance can be applied seamlessly to the i-matt. Your mats are cleaned in place as frequently as your floors in the same operation



EFM Absorbent Technology (Entagled Fibre Matrix)

Made up of interlocking fibres that absorb and spread out water so the mat dries fast and traps dirt, preventing it from being tracked around



i-protect

When used with i-mop, i-protect HDD with aXonnite gets mats cleaner and helps prevent recontamination



Roll 3 of precut sections

Each matt has a size of 91.5 cm X 3M, This makes it ideal for entrances and walkways. Can be easily trimmed to fit



New Pig's exclusive P53 Adhesive

i-matt lays flat and stays put with out any shifting or rippling. Is it time to replace the mat? Then you can pull it up easily without leaving any residue. The adhesive layer also creates a barrier to keep liquids from leaking through

I-MOVE 4B 1 Year Warranty



i-move 4B is an ergonomic backpack vacuum cleaner that allows you to move with maximum mobility. You can carry the lightweight and cordless i-move 4B on your back. This allows you to move with maximum mobility and work efficiently.

Thanks to backpack vacuum cleaner you can cover more than twice the floorspace compared to a normal vacuum cleaner, and the ergonomical design prevents strain on your body. The i-move 4B is the ultimate opportunity to improve your cleaning operations- making it cleaner, faster & safer



FASTER



CLEANER



GREENER



SAFER



BETTER FOR EVERYONE

Technical Specifications	
Carry weight	5.7 kg without battery
Body size (l x w x h)	24 × 33 × 36.6 cm ² (excluding the harness)
Hose length	140 cm ²
Capacity	5L
Diameter of tools	32 mm
Sound level	68 dBA
Water lift/suction	1300 mm
Airflow	24.74 L/sec
Application	dry only
Power source	i-power 9 or 14
Motor wattage	350 watt
Battery spec i-power 9	24 V, 8.8 Ah
Battery spec i-power 14	25.2 V, 14 Ah
Runtime i-power 9	40 min
Runtime i-power 14	50 min
Charger type	External Charger
Material machine	PP

The filtration on this machine is upgradeable from standard, to HEPA, to ULPA. Available in private label for our customers in 20 and 100 batches. Customize your machinery with your own names and logo's to project your company / industry image.



Activated by i-power

i-power batteries are interchangeable for all our battery powered machines, and can be switched out in seconds. We offer two battery types: i-power 9 or i-power 14. Depending on runtime you can mix & match your sources



Travel light

The cordless i-move 4B with its lightweight backpack, gives you more freedom of movement especially in confined areas. You don't have to worry about difficult terrain with bumps, steps, or other obstacles



Be comfortable

The mesh backing helps you stay comfortable and cool during operation. The wide shoulder straps in combination with the chest straps provide for maximum flexibility. The unique carrying system of the i-move 4B, ensures ultimate comfort during lengthy working time



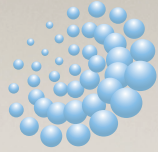
You're in control

Easily switch the machine on and off by clicking the remote control power switch on your belt



Improve air quality

Upgrade the standard filter to a HEPA or ULPA filter when operating in a controlled environment



OESPREDEEP CLEAN
DRY STEAM CLEANING TECHNOLOGY

THE STEAMCARE RANGE

Uniquely Validated Bactericidal Efficacy





STEAM & VAC PRO

M4011

1 Year Warranty



The Steam & Vac Pro is the ultimate infection control tool combining sanitizing dry steam and a vacuum cleaner in one! It might be hard to believe that clean cold tap water is all that is needed to fight infections but when heated to over 100 degrees Celsius, the water content is reduced to less than 5%. The resulting steam is considered dry. This alternative weapon is ideal in the fight to combat infections and cross contamination's and has been independently and scientifically validated for its bactericidal efficacy!

- The ultimate healthcare steam & vacuum cleaner
- A steam cleaner, a dry vacuum cleaner and a wet vacuum cleaner in one!
- The water filtration system means no vacuum dust bag
- Easy to manoeuvre thanks to the new trolley supplied as standard
- Truly versatile unit for many different environments



Technical Specifications	
Power Supply	230v 50/60 Hz
Maximum Power	3,000 Watt
Steam Pressure	6.5 Bar nominal
Boiler Capacity	2.6 Litres
Boiler Material	RVS AISI 304
Vacuum / Vac Tank Capacity	91,15 × 900 cm
Heating Up Time	Approx. 5 minutes
Autonomy	Continuous Operation
Cable length	4 metres
Machines Dimension (W D L)	52cm x 37cm x 43cm
Net wieght	14 kg
Certification / Marking	30 kg
Max. Boiler Temperature	154°C
Adjustable Output Regulator	Yes
Indicator for Lack of	Yes

Steam & Vac Pro Accessories (Include with Machine)



Central
Connector Hose
A00260



Double Lock Extension
Tubes*
A00982



60mm Nylon Brush
A00264



30mm Nylon Brush
A00806



Detail Nozzle
A00260



150 mm Suction Tool
A00078



150mm Squeegee Insert
A00080



150mm Squeegee Insert
A00078



150mm Brush Insert
A00079



Detail Gulper Nozzle
A00075



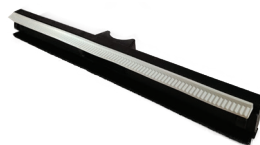
Nylon Brush Insert
A00267



300mm Squeegee Floor Insert
A00266



300mm Carpet Insert
A00939



300mm Double Sided Insert
(Squeegee & Brush)
A00981



Upholstery Spatula
A00826



Small Gulper Nozzle
A00945



Steam & Vac Pro Trolley
A00238



Safety Gloves
A00097

Optional Accessories



Wall Steam Mop**
A03160



Adaptor Tool
A03163



Floor Mop **
A03159



Upholstery Vacuum Tool
A00173



Turbo Brush
A02152



Microfibre Cloth for Floor Mop
A03161



30mm Brass Detail Brush
A00835



Safety Goggles
A00096



Cleaning in Progress Safety Sign
A00972



Large Detail Nozzle
A00070

* Only one supplied when purchased as a stand alone item

** A03163 required with this item



PROVAP EVO VAC M6047

1 Year Warranty



The ProVap Evo Vac cleaning system will ensure that your own hygiene and HACCP regulations are not only maintained but exceeded. Utilising dry steam heated to 175°C, germs and grime will be easily and quickly removed. The integral vacuum will clean up the residue while you steam, resulting in an instant touch dry surface, ready for use.

The ProVap Evo Vac features a detergent injection facility to enables the addition of a suitable mild detergent to the dry steam jet for de-greasing. The ProVap Evo Vac have been the subject of independent studies to investigate its cleaning efficiency.

- Independently validated decontamination results
- Achieves consistently high levels of sanitation
- Tackle infection control issues with confidence
- Integrated water filtration vacuum leaves surfaces clean & touch dry
- Optional healthcare specific tools available developed specially for high risk contact areas
- Area Specific Stand Operating Procedures (SOP) available on request



Technical Specifications	
Power Supply	230v 50/60 Hz
Maximum Power	3,000 Wat
Steam Pressure	9.0 Bar nomina
Boiler Capacity	2.7 Litres
Boller Material	RVS AISI 304
Vacuum / Vac Tank Capacity	Max. 1000 W 5.0 Litres
Heating Up Time	Approx. 5 minutes
Autonomy	Continuous Operation
Cable lenght	5 metres
Machines Dimension (W D L)	49 cm x 43 cm x 105cm
Net wieght	36Kg
Shipping Weight	40Kg
Certification/Marking	CE, IPX4
Max. Boiler Temperature	180°C
Adjustable Output Regulator	Yes
Adjustable Output Regulator	Yes

Provap Evo Vac Accessories (Include with Machine)



Central
Connector Hose
A00983



Double Lock Extension
Tubes*
A00982



60mm Nylon Brush
A00264



30mm Nylon Brush
A00806



Detail Nozzle
A00943T



150 mm Suction Tool
A00078



150mm Squeegee Insert
(Fits A00078)
A00080



150mm Squeegee Insert
A00078



150mm Brush Insert
A00079



Detail Gulper Nozzle
A00075



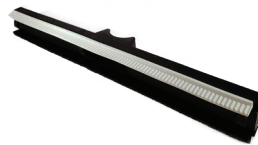
Nylon Brush Insert
A00267



300mm Squeegee Floor Insert
A00266



300mm Carpet Insert
A00939



300mm Double Sided Insert
(Squeegee & Brush)
A00981



Upholstery Spatula
A00826



Small Gulper Nozzle
A00945



Safety Gloves
A00097

**Cleantec
Innovation**

Led by science - defined by nature



Cleaning Technology

For All Type of Carpet





ENVIRODRI GEN 4

DRY CARPET CLEANING

The Envirodri system is one of the most efficient and environmentally responsible ways to clean all types of carpet without the use of water. To be used in conjunction with Pro 40 Envirodri Microsponges, the dry carpet cleaning machine is suitable for both spot and deep cleaning which enables facilities to maintain their flooring without disruption to daily activities.

The system clean using 100% biodegradable, natural, soft, sponge-like particles which have been moistened with just the right amount of cleaning ingredients to dissolve and absorb dirt and grime from carpet fibres. The GEN4 machine effortlessly glides over carpets, agitating the microsponges into the fibres whilst also acting as a pile lifter - cleaning simultaneously restoring previously flat, crushed carpet. After use, simply vacuum for a cleaner, odour-free and dryer carpet



PRODUCT FEATURES

- Self-propelling, lightweight and easy to use
- Water-free cleaning! Carpets can be walked on during and immediately after use.
- Suitable for both large and small spaces
- Can be used for both spot removal and for deep cleaning of carpets



SIZES

Single machine sold with medium white standard brushes. Leasing options also available. Contact us to find out more.

Other brushes of varying grade of stiffness are also available for very soft or hard carpet types.





PRO 40 ENVIRODRI MICROSPONGES

Suitable for use on all carpet types, Pro 40 Microsponges is one of the most advanced dry carpet cleaning powders on the market today. Made from 100% biodegradable, natural, soft, sponge-like cellulose fibres these microsponges have been moistened with just the right amount of cleaning ingredients to dissolve and remove dirt and grime from carpet fibres.

Suitable for all types of carpet and both spot removal or deep cleaning, the microsponges should be used in conjunction with the Envirodri GEN 4 Dry Carpet Cleaning Machine or a carpet brush.



PRODUCT FEATURES

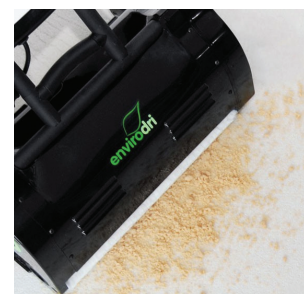
- Independently tested and certified by Woollsafe
- Product dissolves and absorbs both oil and water based dirt
- Removes unpleasant odours
- Suitable for all carpet types including wool, sisal and coir
- Suitable for use on raised access flooring
- Carpet can be walked on during and immediately after cleaning
- Leaves no sticky residues
- This dry cleaning method eliminates the risk of shrinkage, watermarks, colour-running and mildew
- 100% biodegradable and environmentally friendly
- Compatible with the HOST dry carpet cleaning machines including the Freestyle, Reliant and Liberator



SIZES

750g of Pro 40 Microsponges will clean approximately 20m² of medium soiled carpet.

- 1 × 10Kg Carry Bucket
- 2 × 10Kg Re-fill Packs
- 4 × 3Kg Carry Buckets
- 12 × 750g Pouches



FRAGRANCES

- Green Tea
- Fresh Linen
- Unfragranced

wetrok®

Chemicals & Machines

Cleaning, Care & Protection Products





MONOMATIC LS (LOW SPEED)

For scrubbing, spray cleaning, sanding, shampooing, oiling and basic cleaning of a wide range of floors, with optional accessories.



Technical Data	
Rated voltage	230 V
Frequency	50 Hz
Working width	43 cm
Power cable length	12.5 m
Weight	34 kg
Brush speed	162 rpm
Brush motor output	1,200 W
Torque	55 Nm

Method	
Sanding (wet/dry)	●
Wet scrubbing	●
Dry scrubbing	●
Wet shampooing	●
Carpet-pad method	●
Spray cleaning	●
Oiling	●
Waxing	
Polishing	



MONOMATIC HS (HIGH SPEED)

For spray cleaning, spray polishing and dry polishing a wide variety of floor coverings, accessories optional.

Technical Data	
Rated voltage	230 V
Frequency	50 Hz
Working width	43 cm
Power cable length	12.5 m
Weight	34 kg
Brush speed	400 rpm
Brush motor output	1,500 W
Torque	28.5 Nm

Method	
Sanding (wet/dry)	●
Wet scrubbing	●
Dry scrubbing	●
Wet shampooing	●
Carpet-pad method	●
Spray cleaning	●
Oiling	●
Waxing	
Polishing	



MONOMATIC US (ULTRA SPEED)

For efficient polishing with ultra-speed from medium-sized and large open surfaces.

Technical Data	
Rated voltage	230 V
Frequency	50 Hz
Working width	50 cm
Power cable length	20.5 m
Weight	45 kg
Brush speed	1,100 rpm
Brush motor output	1,800 W
Torque	15.5 Nm

Method	
Sanding (wet/dry)	●
Wet scrubbing	●
Dry scrubbing	●
Wet shampooing	●
Carpet-pad method	●
Spray cleaning	●
Oiling	●
Waxing	
Polishing	



Model		Dimensions	Selling Unit
20051	Monomatic Low Speed (LS)	43 CM	1 PCS
20055	Monomatic Duo Speed (DS)	43 CM	1 PCS
20057	Monomatic High Speed (HS)	43 CM	1 PCS

Brushes		For Model	Selling Unit
21270	Scrubbing brush polypropylene	LS	1 PCS
21285	Scrubbing brush Supernylon	LS	1 PCS
21295	Scrubbing brush exposed aggregate concreted	LS	1 PCS
21300	Scrubbing brush Tynex	LS	1 PCS
21310	Shampoo brush nylon	LS	1 PCS
21315	Shampoo brush nylon hard	LS	1 PCS
21210	Polishing brush Union	HS	1 PCS

Pad Drive Disks		For Model	Selling Unit
21112	Pad drive disk Low Speed	LS	1 PCS
21120	Pad drive High Speed	HS	1 PCS
21126	Pad drive disk HS PUR	HS	1 PCS

Weight		For Model	Selling Unit
21160	Additional weight 1.9 kg	LS	1 PCS
24758	Floorplate 5 kg	LS	1 PCS

Spray Cleaning Accessories		For Model	Selling Unit
24330	Spray unit	LS, HS	1 PCS

Dry scrubbing accessories		For Model	Selling Unit
40312	Suction unit	LS, HS	1 PCS
21025	Suction ring	LS	1 PCS
21022	Appliance power	LS, HS	1 PCS



Sanding Accessories		For Model	Selling Unit
21350	Abrasive disk wood	LS	1 PCS
22401	Abrasive disk wood no. 16	LS	1 PCS
22409	Abrasive disk wood no. 40	LS	1 PCS
22411	Abrasive disk mesh no. 60	LS	1 PCS
22413	Abrasive disk mesh no. 80	LS	1 PCS
22515	Abrasive disk mesh no. 100	LS	1 PCS
22417	Abrasive disk mesh no. 150	LS	1 PCS

General Accessories		For Model	Selling Unit
24310	Water tank 14 l cpl, white	LS	1 PCS



Basic Version	Low Speed (LS) 20051	High Speed (HS) 20057	Ultra Speed (US) 20059
Additional weight 1.9 kg	●		
Floorplate 5 kg			
Appliance power for suction unit		●	

Technical Data			
Rated voltage	230 V		
Frequency	50 Hz		
Working width	43 cm		50 cm
Power cable length	12.5 m		20.5 m
Weight	34 kg	34 kg	45 kg
Brush speed	162 rpm	400 rpm	1,100 rpm
Brush motor output	1,200 W	1500 W	1800 W
Torque	55 Nm	28.5 Nm	15.5 Nm

Method			
Sanding (wet/dry)	230 V		
Wet scrubbing	50 Hz		
Dry scrubbing	43 cm		
Power cable length	12.5 m		12.5 m
Weight	34 kg	35 kg	34 kg
Brush speed	162 rpm	400 rpm	1,100 rpm
Brush motor output	1,200 W	1500 W	1800 W
Torque	55 Nm	28.5 Nm	15.5 Nm



DUOMATIC ESPIRIT

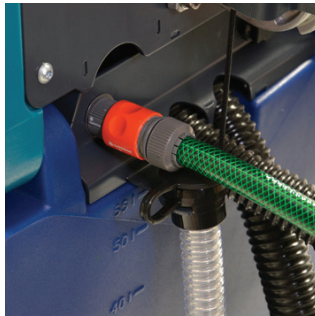
High-performance single-brush machine. Available in four differently equipped version: The **“industry”** model, fitted with a powerful industrial motor for cleaning tasks ; the **“Low Speed”** model, the reliable all rounder for deep and maintenance cleaning; the **“Duo Speed”**, the machine for universal deployment with two speed setting and the **“High Speed”** model for polishing



Model	Name	Dimensions	Selling Unit
50211	Duomatic Esprit	55 l/50 cm	1 pc
50212	Duomatic Esprit Dosing	55 l/50 cm	1pc.

Batteries	Name	Dimensions	Selling Unit
51316	Battery dry 12 V/76 Ah ^l		1 pc
51322	Battery dry 12 V/105 Ah ^l		1pc.

Pads	Name	Dimensions	Selling Unit
51100	Pad drive disk1)	25.5 cm	1 pc
52306	Poly-Pad red 1pc. = 5 pads 52309 Poly pad blue	25.5 cm	1pc. = 5 pads
52309	Poly pad blue	25.5 cm	1pc. = 5 pads
52307	Poly pad green	25.5 cm	1pc. = 5 pads
52308	Poly pad black	25.5 cm	1pc. = 5 pads
52402	Microsol fibre pad	25.5 cm	1pc. = 5 pads



Brushes	Name	Dimensions	Selling Unit
51245	Scrubbing brush Supernylon ¹⁾	25.5 cm	1 pc
51248	Scrubbing brush soft ¹⁾	25.5 cm	1pc.

Suction lips	Name	Dimensions	Selling Unit
64060	Working lip rear 79 NR		1 pc
64061	Sealing lip front 79 NR		1pc.
52084	Working lip rear 79 PUR 45		1 pc
52085	Sealing lip front 79 NR		1pc.
52086	Working lip rear 79 PUR 45 ribbed		1 pc

Accessories	Name	Dimensions	Selling Unit
51400	Universal fill hose, 3 m		1 pc
64139	Chemicals canister 5 litres		1pc.



DISCOMATIC MAMBO

The new Discomatic Mambo combines cleaning power and endurance with agility hence extremely easy operation. It is the most compact scrubbing vacuum cleaner available with a 30 litre fresh water tank. A compact powerhouse for smaller to medium-sized areas.

The new Discomatic Mambo is the most compact scrubbing vacuum cleaner in its performance category. It is robustly constructed and powerful, yet agile. With its 30 litre fresh water tank and a long-lasting lithium ion battery it is ideally suited for longer periods of cleaning work without any interruptions. The proven double disk brush system ensures excellent cleaning results and supports the forward motion of the machine. The Discomatic Mambo has a water pump that is built in as standard and can be supplied optionally with a automatic dosage system for an optimal mix of fresh water and chemicals.

Model	Name	Dimensions	Selling Unit
50025	Discomatic Mambo with brushes	30 l/43 cm	1 pc
50026	Discomatic Mambo Dosing with brushes	30 l/43 cm	1pc
50028	Discomatic Mambo Dosing with PDD	30 l/43 cm	1pc

Pads	Name	Dimensions	Selling Unit
51100	Pad drive disk ¹⁾	22 cm	1 pc
52301	Poly-Pad red	22 cm	1pc. = 5 pads
52304	Poly pad blue	22 cm	1pc. = 5 pads
52302	Poly pad green	22 cm	1pc. = 5 pads
52303	Poly pad black	22 cm	1pc. = 5 pads
52400	Microsol fibre pad	22 cm	1pc. = 5 pads

Brushes	Name	Dimensions	Selling Unit
51240	Scrubbing brush Supernylon ¹⁾	22 cm	1 pc
51244	Scrubbing brush soft ¹⁾	22 cm	1pc.

Accessories	Name	Dimensions	Selling Unit
51400	Universal fill hose, 3 m		1 pc
69254	Splash guard (recommended for use with pads)		1pc.
62684	Chemicals canister with screw-on lid		1pc.
65132	Silent kit		1pc.

1) Two required per machine



DRIVEMATIC DELIGHT

Drivematic Delight thoroughly cleans large areas even faster. Its compact dimensions and small turning radius ensures highest operating flexibility - even in elevators and checkout areas. The ergonomic seat allows your staff to get going right away - no complicated seat settings required.

Model	Name	Dimensions	Selling Unit
50092	Drivematic Delight	70 l/66 cm	1 pc
50093	Drivematic Delight Silent	70 l/66 cm	1pc
50094	Drivematic Delight SL	70 l/66 cm	1pc
50095	Drivematic Delight Silent SL	70 l/66 cm	1pc
50096	Drivematic Delight Dosing	70 l/66 cm	1pc
50097	Drivematic Delight Dosing Silent	70 l/66 cm	1pc
50098	Drivematic Delight Dosing SL	70 l/66 cm	1pc
50099	Drivematic Delight Dosing Silent SL	70 l/66 cm	1pc

Batteries	Name	Dimensions	Selling Unit
51322	Battery dry 12 V/105 Ah ¹⁾		1 pc
51341	Battery dry 6 V/180 Ah ¹⁾		1pc.

Pads	Name	Dimensions	Selling Unit
65061	Pad drive disk	33 cm	1 pc
52321	Poly-Pad red	33 cm	1pc = 5 pads
52324	Poly pad blue	33 cm	1pc = 5 pads
52322	Poly pad green	33 cm	1pc = 5 pads
52322	Poly pad black	33 cm	1pc = 5 pads
52404	Microsol fibre pad	33 cm	1pc = 5 pads

1) Two required per machine



Brushes	Name	Dimensions	Selling Unit
65058	Scrubbing brush ¹⁾ polypropylene	22.5 cm	1 pc
65059	Scrubbing brush soft	22.5 cm	1pc.

Suction lips	Name	Dimensions	Selling Unit
65002	Suction lip set NR		1 pair
65053	Suction lip set PUR		1 pair

Suction lips	Name	Dimensions	Selling Unit
65002	Suction lip set NR		1 pair
65053	Suction lip set PUR		1 pair

Suction lips	Name	Dimensions	Selling Unit
51400	Universal fill hose, 3 m		1 pc
65062	Replacement chemicals tank ⁸ lt		1 pc

1) Two required per machine

Drivematic Delight

Drivematic Delight Dosing

Model	Standard	Silent	SL	Silent SL
Article Number	50092	50093	50094	50351

Model	Standard	Silent	SL	Silent SL
Article Number	50092	50093	50094	50351

Basic Version	Standard	Silent	SL	Silent SL
Internal charger	●	●	●	●
Electric drive system	●	●	●	●
Quick-Refill system	●	●	●	●
Brush housing complete	●	●	●	●
Suction nozzle complete	●	●	●	●
Suction lip set NR	●	●	●	●
Dosage system complete				

Basic Version	Standard	Silent	SL	Silent SL
Internal charger	●	●	●	●
Electric drive system	●	●	●	●
Quick-Refill system	●	●	●	●
Brush housing complete	●	●	●	●
Suction nozzle complete	●	●	●	●
Suction lip set NR	●	●	●	●
Dosage system complete	●	●	●	●

Optional Extras	Standard	Silent	SL	Silent SL
Silent Kit		●		●
Safety light (SL)			●	●

Optional Extras	Standard	Silent	SL	Silent SL
Silent Kit		●		●
Safety light (SL)			●	●

Technical data	
Theoretical area perf.	3,960m ² /h
Working width	68 cm
Total length	138 cm
Total width	68 cm
Suction width	85 cm
Total height	117 cm
Weight (incl. batteries)	386 kg
Fresh water tank	70 l
Recovery tank	70 l
Number of brushes	2 pcs
Brush pressure	30 kg (0.28 N/cm ²)
Brush speed	180 rpm
Brush motor output	500 W
Vacuum	110 mbar
Airflow rate	32 l/s
Forward speed	0-7 km/h
Reversing speed	0-2.5 km/h
Battery capacity	105/180 Ah
Suction turbine output	460 W
Drive type	Drive motor
Max. gradability	12%
Total output	1,690 W
Drive system output	750 W
Noise level	63/59 dB(A)
Dosage	0.5-5.0%

Battery	
Battery life 105 Ah	up to 2.4 h
Battery life 180 Ah	up to 3.5 h



ROBOMATIC MARVIN

The Robomatic Marvin is both: a tried-and-tested scrubber-dryer and a fully fledged cleaning robot. As always with a Wetrok product, the Robomatic Marvin has been fully thought through to the end. The result: high-end technology in a compact design offering far more than a conventional robot. Cleaners can use it as required, either autonomously, as a stand-alone cleaning robot, or manually operated.



Specifications & Features	
Brush motor output	2 × 100 W
Working width brushing	430mm
Brush contact pressure	42 kg / 0.65 N/cm ²
Brush speed	200 rpm
Working width vacuuming	550 mm
Tank for fresh/dirty water	200 rpm
Cleaning product tank	2 l
Theoretical area performance	up to 1,400 m ² /h in autonomous mode
Area performance per tankful	up to 1,520 m ²
Battery type	Lithium iron phosphate LiFePO ₄
Battery life	up to 3.0 h in eco mode
Battery charging time	up to 11 h
Speed in autonomous mode	up to 3.3 km/h
Clearance width in autonomous mode in corridors	min. 100 cm
Clearance width in autonomous mode for doorways	min. 80 cm
Empty weight	99 kg incl. battery
Weight	138 kg (ready for operation)
Dimensions	(L × W × H) 1,050 × 605 × 850 mm



WETCO SURF

All purpose cleaner - maintenance cleaner



Hard flooring



Cleaning by hand



Wet mopping



Foaming by hand
(foamer dispenser)



Surfaces, furniture



Nordic Swan

Application

- Versatile, alcohol-based all purpose cleaner
- For maintenance cleaning of alcohol-resistant washable surface and floor covering
- Certified environmentally friendly maintenance cleaner (Nordic Ecolabel)

PH value

7.5 - 8.5

Foam

High foaming

Properties

- Dries quickly without leaving streaks
- High foaming
- pH neutral
- Lightly perfumed

Please Note

Use a max dosage 1% for polymer-coated floors



WETCO FLOOR

Floor cleaner - maintenance cleaner



Scrub drying



Hard flooring



Cleaning by hand



Wet mopping



Nordic Swan

Application

- Versatile maintenance cleaner
- For maintenance cleaning of washable and alkali-resistant surfaces/floor coverings (PVC, natural and artificial stone, clinker asphalt, linoleum, natural rubber, etc.)
- Certified environmentally friendly maintenance cleaner (Nordic Ecolabel)

PH value

9.5-10.5

Foam

Suitable for machine use / low foam

Properties

- Low foaming
- Slightly alkaline
- Non-perfumed.

Please Note

Not suitable for maintenance cleaning of non-sealed wooden flooring.



WETCO SAN

Sanitary cleaner - maintenance cleaner



Cleaning by hand



Wet mopping



Foaming by hand
(foamer dispenser)



Surfaces, furniture



Nordic Swan

Application

- Sanitary maintenance cleaning for removing limescale
- For maintenance cleaning of washable and acid-resistant surfaces/fittings (sanitary porcelain, fittings, ceramic tiles, bathroom, showers, washroom and WCs, etc.)
- Certified environmentally friendly maintenance cleaner (Nordic Ecolabel)

Properties

- High foaming.
- Highly acidic.
- Red in colour.
- Non-perfumed

PH value

0.5-1.5

Foam

High foaming

Please Note

Not suitable for acid-sensitive surfaces (lime stone, marble, clinker, aluminium, etc.)



MEPOL H

Flooring protection - coating



Hard flooring



Coating

Application

- High-shine protective treatment
- For treating hard and elastic floor coverings (PVC, linoleum, natural and artificial stone, etc.)

Properties

- Polymer/wax-based
- High-shine
- Water vapour diffusion guaranteed
- Forms a polishable, water-resistant protective film

PH value

8-9

Foam

-

Please Note

- Shake well before use
- Not suitable for outdoors, wet zones.
- Treat porous floor coverings with Porosol before use

Protective Treatment

Undiluted



REMAT

Floor cleaner - basic & industrial cleaners



Cleaning by hand



Wet mopping



Foaming by hand
(foamer dispenser)



Surfaces, furniture



Nordic Swan

Application

- High performance stripper
- For removal of polymer and wax coatings
- For chemical cleaning of washable and alkali-resistant floor coverings (PVC, natural and artificial stone, clinker, etc.)

PH value

12.5-13.5

Foam

Suitable for machine use/low foam

Properties

- Low foaming
- Contains solvents
- Highly alkaline
- Lightly perfumed

Please Note

Not suitable for linoleum, natural rubber wooden flooring, asphalt, painted surfaces.



ELIMINATE
INVISIBLE ENEMY



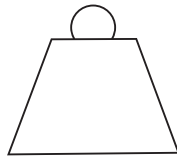
CLEAN ZONE (CZ01)

1 Year Warranty

FOR PEDESTRIAN AND LIGHT WHEELED TRAFFIC UP TO 1000LBS/PSI

99.9%

Prevents up to 99.9% of contamination from entering critical areas



Suitable for traffic up to 1000lbs / psi



12 month warranty

ABOUT

CZ01 is a high performance contamination control zone suitable for light wheeled traffic and heavier pedestrian flows. Permanently installed, it is the most effective way of controlling all form of foot, wheel and air borne contamination. Contamination Control Mats CleanZone is available in a range of attractive designs which means it still looks good between wet cleaning.

OPTIONS

CZ01 has the flexibility to be installed into a variety of different sized and shaped areas, it is accompanied by a number of edging sytem choices that will be illustrated in this brochure and can be demonstrated by our contamination control specialists

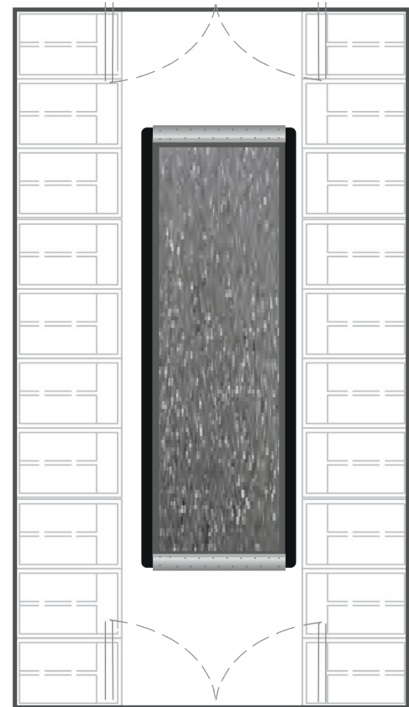


WHERE TO USE CLEANZONE

- In hallways to prevent cross contamination
- Inside the critical area adjacent to critical products and process
- Inside airlocks, gowning rooms, and air showers to control and retain contamination
- All pedestrian "Exit Area" to prevent contamination
- All pedestrian "Entrances" to critical areas to prevent ingress of contamination



PRODUCT OPTIONS AVAILABLE



CUSTOM PRODUCT OPTION

- Suitable for areas that are complex in shape and construction
- Ideal for inlaid or wall-to-wall flooring installations
- Ideal for facilities that require multiple installations at any one time
- Available with a range of edging options that helps tailor Contamination Control Mat to your individual needs
- Expected life cycle efficiency (if maintained correctly as per manufacturer's instructions) for 3-5 years
- **Standard 12 month product warranty offered from date of installation**
- Simple centred solution
- Dirty / Clean side two - tone options
- Ideal for Airlocks, Air showers and step over benches
- Perfect for CNC to ISO 4+

BENEFITS

- Prevents over 99% of contamination from entering your critical area
- It effectively attracts, collects and retains contamination from the wheels of forklifts, pallet trucks, large trolley and carts
- Large sizes available to ensure maximum decontamination of wheels
- Flame retardant option available
- Comes with two complete different edging options : heavy duty aluminium edging or a lower profile stainless steel option
- Coving and inlaid options available
- Periodic replacement or service contract available
- Masking available - to hide contamination once on Contamination Control Mat

CZ01 COLOURS



Decorative colors
to mask the contamination

Solid colors to highlight the contamination



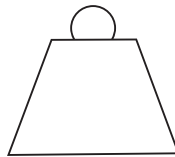
WORK ZONE (CZ02)

1 Year Warranty

FOR LARGE TROLLEY, PALLET TRUCKS AND FORK LIFTS

99.9%

Prevents up to 99.9% of contamination from entering critical areas



1280lb/psi



12 month warranty

ABOUT

CZ02 has been specially designed to remove contamination from areas subject to heavy wheeled traffic. It effectively attracts, collects and retains contamination from the wheel of forklifts, pallet trucks, large trolleys and carts, preventing particles and microbes from getting into your critical areas.

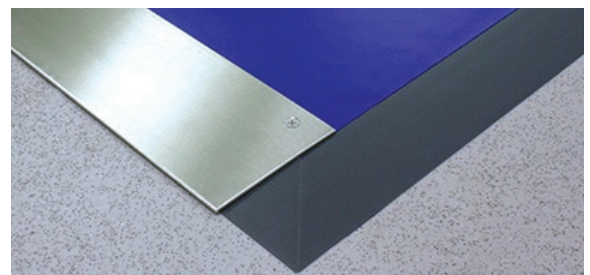
OPTIONS

CZ02 has the flexibility to be installed into a variety of heavy duty areas, it is accompanied by either a heavy duty aluminium or low profile food grade stainless steel option. These are illustrated in this brochure and can be demonstrated by our contamination control specialists

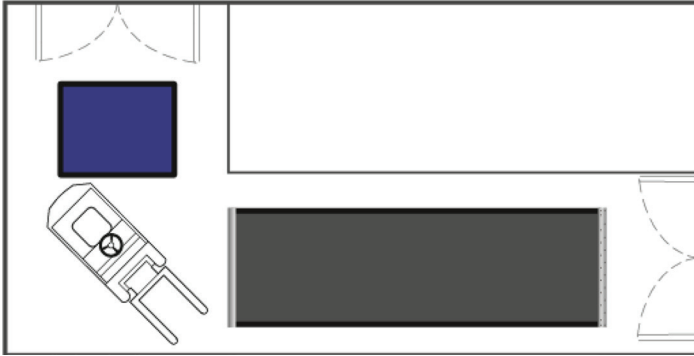


WHERE TO USE WORKZONE

- In hallways to prevent cross contamination
- All material exits to prevent contamination leaving the critical area
- Inside airlocks, warehouses, and product transfer areas to control and retain contamination
- In hallways to prevent cross contamination
- Inside the critical area adjacent to critical products and processes



PRODUCT OPTIONS AVAILABLE



CUSTOM PRODUCT OPTION

- Suitable for areas that are complex in shape and construction
- Ideal for complex inlaid or wall-to-wall flooring installations
- Ideal for facilities that require multiple installations at any one time
- Available with a range of edging options that helps tailor Contamination Control Mat to your individual needs
- Expected lifecycle efficiency (if maintained correctly as per manufacturer's instructions) for 3-5 years
- **Standard 12 month product warranty offered from date of installation**

BENEFITS

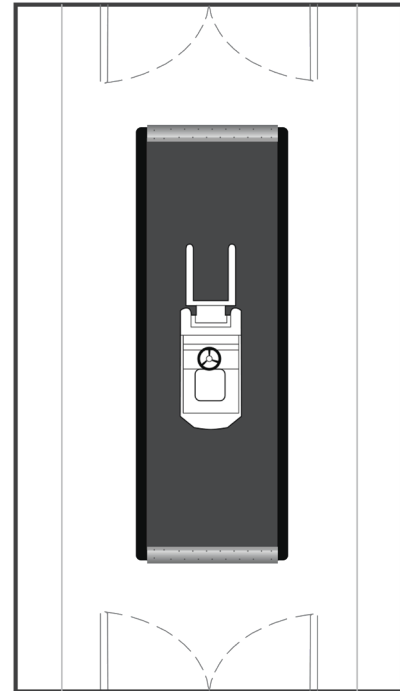
- Prevents over 99.9% of contamination from entering your critical area
- Reduced floor and air particle / microbial counts
- Improved yield, cost savings and profit ability
- Reduced risk of high product rejection rates
- Contamination Control Mats products cannot be bypassed and require no overt action
- Available in a range of low profile edging systems
- Flame retardent option available
- Coving and inlaid options available

CZ02 COLOURS



Decorative colors
to mask the contamination

Solid colors to highlight the contamination



- Centered solution
- Ideal for heavy duty zones
- Ideal for facilities that require multiple installations at any one time
- Material Airlocks, Primary Packaging and Goods/ Warehouse
- Can be fitted into CNC - ISO 4+



INNOVATION THAT SHINE





FLORAL DISINFECTANT

A readily biodegradable amphoteric disinfectant with a pleasant floral bouquet. Suitable for areas where a high standard of hygiene is required, such as washrooms, toilets, showers, drains & dustbins

Specification

Coverage	750m ² of floor if used at 1:30 for single solution mopping.
Case	1 × 20 litre

Detail

- Suitable for areas where a high standard of hygiene is required, such as washrooms, toilets, showers, drains and dustbins
- The pH of the concentrate under typical analysis is 8.0.
- 1 × 5 litre container of Floral Disinfectant is sufficient to cover approximately 750m² of floor if used at 1:30 for single solution mopping.



SCREEN POWERFUL DISINFECTANT

Powerful disinfectant, for the ultimate hygiene clean. Concentrated disinfectant cleaner with powerful virucidal, bactericidal and fungicidal properties. Deactivates MRSA, HIV, Hepatitis B, Legionella and Athletes Foot. Use for damp mopping, damp wiping, spray cleaning and deep cleaning applications. Also suitable for clinical cleaning and disinfection.

Specification

Code	P06068
Size	2 × 5 litre

Detail

- Effective against MRSA, HIV, Hepatitis B, Legionella & Athlete's Foot
- BS EN 1276 accredited



SAVONA D2

10% active, neutral general purpose detergent. Rapidly cuts through grease, fat and food residue. General purpose detergent for hand dishwashing. Also suitable for general purpose cleaning of surfaces, walls and floors.

Specification	
Code	P12025
Size	1 × 20 litre

Detail

- For hand dishwashing
- Long lasting foam with no residual scum
- Rapidly removes grease
- Mild & gentle to the skin
- Does not require rinsing
- For general cleaning of all hard floors
- Readily biodegradable
- Also for windows, paintwork, walls & hard surfaces
- Economical



SPRING CLEAN

Revitalize Washrooms with Springclean Washroom Cleaner, a versatile, potent formula. This concentrated, anti-bacterial cleaner is perfect for robust surfaces, especially in hygiene-sensitive areas. Infused with natural orange oil, it efficiently removes body fat and soap scum, adhering well to vertical surfaces. Ideal for washrooms, it also excels on various surfaces, such as plastic, enamel, laminate, ceramic, stainless steel, chrome, glass, and painted surfaces. Effortlessly eliminating grime, it leaves a refreshing citrus finish

Specification	
Code	P06076
Size	2 × 5 litre

Detail

- This concentrated, anti-bacterial multi-purpose cleaner can be used on a range of hard surfaces; especially in washroom, bathroom and toilet areas where hygiene is paramount
- this component also makes a highly effective body fat and soap scum remover whilst its viscous properties provide excellent cling to vertical surfaces.



CLEAN & BUFF FLOOR MAINTAINER

Clean & Buff is a high quality floor maintainer for routine spray buffing, mopping and scrubber drying of hard floors particularly those treated with an emulsion polish. Its specialised blend of detergent and slip-resistant wax make it a versatile floor maintainer. It cleans, polishes, and deodorises in one quick and easy application, helping to extend the life of your floor. Clean & Buff not only enhances gloss but maintains the quality of your finish and enhances the non slip properties of the polish.

Specification

Code	P01031
Size	2 × 5 litre



CS8 CARPET SHAMPOO

A high quality dry foam carpet shampoo, with fungicidal qualities, high foam cleaning power and a good resistance to re-soiling. CS8 has been formulated for cleaning all carpets using the conventional dry foam shampooing method with a standard speed rotary machine, shampoo brush and solution tank. It may also be used for hand cleaning textile upholstery.

Specification

Code	08004
Size	2 × 5 litre

Detail

- For the deepest of deep carpet cleans
- High quality dry foam carpet shampoo
- Also suitable for bonnet mopping, pre-spraying & stain removal



CACHAN LUXURY HAND WASH

A high quality, delicately perfumed cosmetic grade liquid handwash for use through soap dispensers. It contains a blend of finest grade synthetic cleansers and moisturiser giving a mild, cleansing action maintaining skin softness

Specification

Code	08265
Size	2 x 5 litre

Detail

- Soft and gently cleansed hands & skin
- Clean & moisturises
- Produces a rich luxurious lather



PUMAN HSD HIGH STRENGTH DEGREASER

Powerful anti-bacterial alkaline cleaner and degreaser that will cut through even the most substantial build-up of oil and grease. Kills 99.99% bacteria, including E. coli, S. aureus & E. hirae

Specification

Code	08265
Size	2 x 5 litre



M10 MULTI-PURPOSE CLEANER

Clean & Buff is a high quality floor maintainer for routine spray buffing, mopping and scrubber drying of hard floors particularly those treated with an emulsion polish. Its specialised blend of detergent and slip-resistant wax make it a versatile floor maintainer. It cleans, polishes, and deodorises in one quick and easy application, helping to extend the life of your floor. Clean & Buff not only enhances gloss but maintains the quality of your finish and enhances the non slip properties of the polish.

Specification	
Code	P01031
Size	1 × 20 litre

Detail

- For use on a wide variety of hard surfaces and floors
- Highly effective alkaline cleaner / degreaser



COUNTRY FRESH

A spray liquid air freshener ideal for counteracting cooking, toilet and other unpleasant odors

Specification	
Code	08041
Size	1 × 20 litre

hovid
Continuous Innovation & Quality

DISINFECTANT TABLETS





GERMISEP 2.5 GRAM (100 TABLETS)

Chlorine is a widely used water disinfectant to sanitize and helps in killing most viruses and bacteria in water. The slow-dissolving nature of the tablet reduces the risk of chlorine overdose and thereby making it a perfect choice for sanitizing the pools. The chlorine tablets are active agents in killing pathogens that can result in illnesses.

Usage	Chlorine (PPM)	1 Tablet	Method
Spillage of blood	10 000	100 ml	Flood & wipe (allow 2 minutes of contact time before wipe)
General Disinfection	1000	1litres	Wipe
WC's, drains, sinks	400	3.75 litres	Pour in solution at quite periods
Food preparation surface	200	7.5 litres	Clean surface thoroughly. Wet surfaces thoroughly with GERMISEP solution. Stand for 3 minutes. Air dry or use disposable paper towels to wipe dry, which ever appropriate.
Walls, Floors	200	7.5 litres	
Glassware	100	15 litres	Clean glassware before soak in GERMISEP solution for at least 30 minutes. Drain and let it air dry.
Mops and cloths	100	15 litres	Soak for 30 minutes. Do not leave to soak overnight.



PREMSEP 2.5 GRAM (100 TABLETS)

A general purpose versatile sanitiser for deodorising and disfecting toilets, floor, walls, work surfaces, cutlery, cloth and mops. Premsep disinfectant tablets release a powerful disinfectant that will kill all Gram +ve and Gram-ve bacteria, viruses and spores. Each tablet release a minimum 1000 parts per million chlorine per litre of water even after prolonged storage

Usage	Chlorine (PPM)	1 Tablet	Method
Blood & Urine Spillage	10 000	100 ml	Ventilated room. Minimum 2 minutes contact time with solution.
General Disinfection	1000	1litres	Allow 15 minutes contact time
WC's, drains, sinks	400	2.5 litres	Pour in solution at quite periods
Food preparation surface	200	7.5 litres	Clean surface thoroughly before using solution. Wet thoroughly for 3 minutes. Air dry or use disposable paper towels. As above
Walls, Floors	200	7.5 litres	
Glassware	100	10 litres	After cleaning, soak glasses and allow to air dry
Mops and cloths	100	10 litres	Soak for 30 minutes. Do not leave to soak overnight.

Others





Sinar Global Hygiene Nitrile Industrial Powder-free Gloves

- Industrial grade
- Powder-free gloves
- Available in size S, M, L & XL

Spillage Kit



- 2 pcs disposable gloves
- 156g sterisorb powder
- 1 biohazard yellow waste bag
- 1 hospicare 70 alcohol wipes
- 2 pcs c-fold tissue
- 1 pc scoop
- 1 pc green tie

WHAT ARE THE MAIN TYPES OF SPILLAGE FOUND IN HOSPITALS?

- Chemical
- Body fluid
- Urine & vomit
- Chemotherapy
- Blood
- Biohazard



CENTRE PULL TOWELS

The large roll accommodates high-traffic environments, while the pull-down dispensing method ensures that each paper towel remains clean and unused until it is dispensed by each customer or employee.



HAND ROLL TOWELS

Toilet paper, sometimes called toilet tissue in Britain, is a tissue paper product primarily used to clean the anus and surrounding area of fecal material after defecation and to clean the perineal area of urine after urination or other bodily fluid releases.



FACIAL TISSUES

The terms are commonly used to refer to the type of paper tissue, usually sold in boxes, that is designed to facilitate the expulsion of nasal mucus from the nose (nose-blowing) although it may refer to other types of facial tissues such as napkins and wipes.



NAPKINS

The term is commonly used to refer to the type of facial tissue, usually sold in boxes, that is designed to facilitate the expulsion of nasal mucus although it may refer to other types of facial tissues including napkins and wipes.



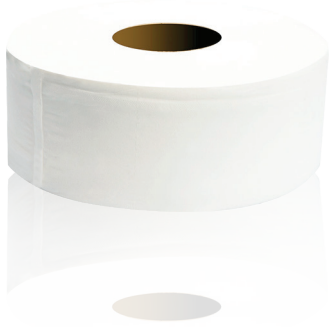
INTERFOLD TOWEL

Interfold Hand Towels. Blue or white hand towels for drying hands in both kitchen and washrooms. Interfold to reduce wastage. Fits small or large hand towel dispenser.



HYGIENE BATHROOM TISSUE

Bathroom tissue, paper towels, facial tissue, paper handkerchiefs and table napkins all play a critical role in hygiene, cleanliness and comfort. Tissue paper products function marvelously to promote hygiene by helping to prevent the spread of germs, bacteria, viruses and disease.



JUMBO ROLLS

Jumbo roll tissue is designed to minimize maintenance, since the big rolls help keep even busy bathrooms running smoothly. These large toilet paper rolls are compatible with high-capacity side-by-side dispensers



TOILET TISSUES

Toilet paper, sometimes called toilet tissue in Britain, is a tissue paper product primarily used to clean the anus and surrounding area of fecal material after defecation and to clean the perineal area of urine after urination or other bodily fluid releases.



HOSPITAL BED SHEETS

The purpose of a fitted bottom sheet is to keep it from slipping off the mattress while the bed is in use. A particular way of folding and tucking while making the bed, known as "hospital corners," is sometimes used when the bottom sheet is flat rather than fitted.

ROUND MOP & CIRCULAR MOP PRODUCTION

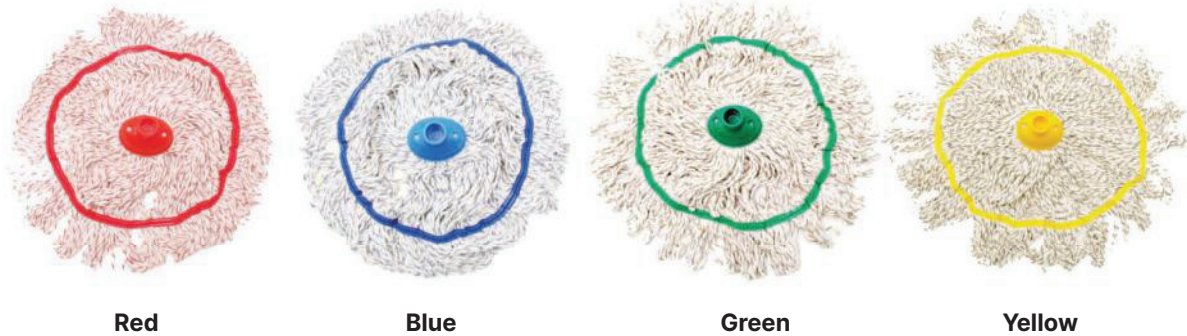
Full Colour Round Mop 300gm



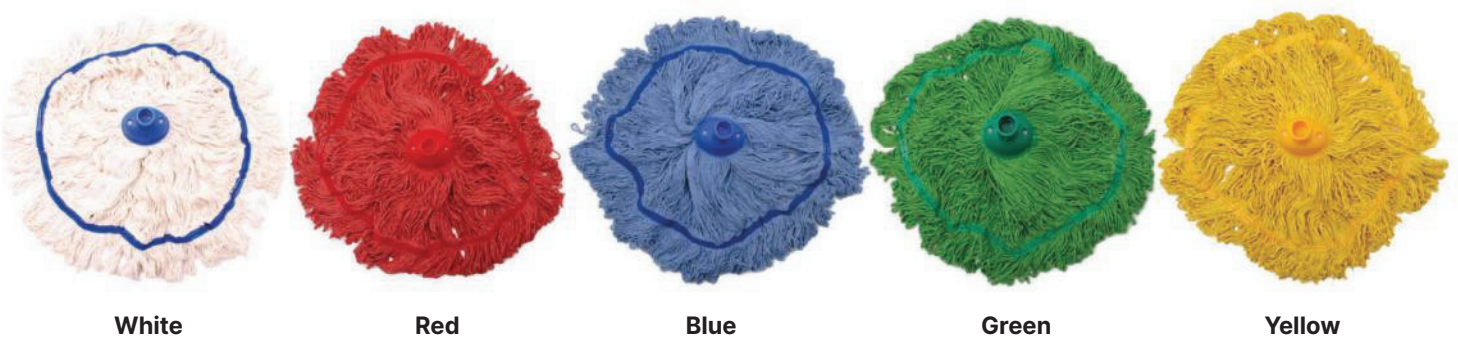
Semi Colour Round Mop 300gm



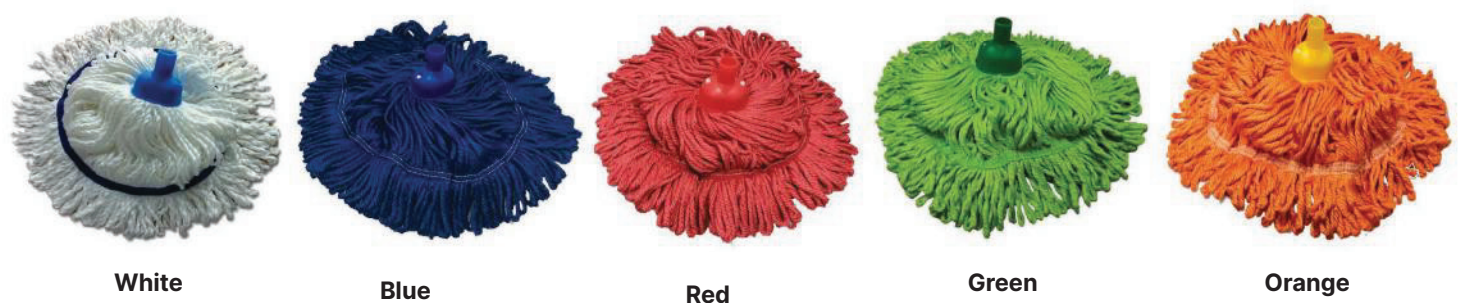
Cotton Circular Mop CW Colour Ribbon 300gm



Full Colour Circular Mop 300gm



Microfibre Circular Mop 300gm



INDUSTRIAL DUST MOP & KENTUCKY MOP



Blended Cotton Dust Mop Refill
Size:
40cm / 60cm / 80cm / 100cm



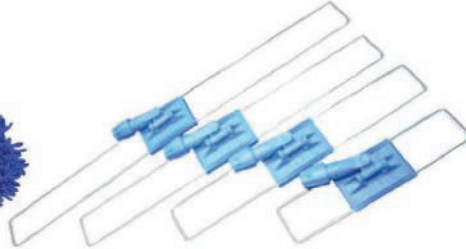
Arcrylic Dust Mop Refill
Size:
40cm / 60cm / 80cm / 100cm



Microfibre Dust Mop Refill (White)
Size:
40cm / 60cm / 80cm / 100cm



Microfibre Dust Mop Refill (Blue)
Size:
60cm / 80cm



Dust Mop Frame
Size:
40cm / 60cm / 80cm / 100cm



Italy Microfibre Flat Mop Frame
Size:
40cm / 60cm



Italy Microfibre Wet Pad Refill
Size:
40cm / 60cm

Kentucky Mop Series:



- Colour Ribbon**
-  White Ribbon
 -  Blue Ribbon
 -  Red Ribbon
 -  Yellow Ribbon
 -  Green Ribbon

Size: 350g



Size: 350g

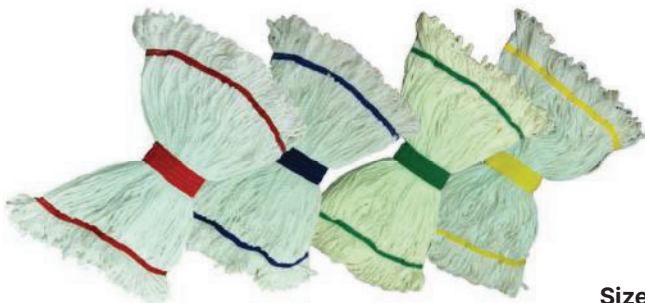


Size: 350g

Cotton Kentucky Mop Refill (Colour Ribbon)

Kentucky Mop Refill (Colour Strips)

Full Colour Kentucky Mop Refill



Size: 350g



Size: 350g

Microfibre Kentucky Mop Refill (Colour Ribbon)

Microfibre Kentucky Mop Refill (Full Colour)



Kentucky Mop Clip



Ceiling Mop Refill



Ceiling Mop Frame

GENERAL CLEANING EQUIPMENT



Nylon Paddy Broom (Taico)
Size: 430(W) x 290 (H)mm



Nylon Paddy Broom (LHT)
Size: 440(W) x 300 (H)mm



Sweeper Broom (Hard)
Size: 290 (W) x 160 (H)mm



Sweeper Broom (Soft)
Size: 290 (W) x 170 (H)mm



Green Handpad
Size: 90 (W) x 120 (H)mm



Deck Brush
Size: S 60(w) x110(L) x 70(H)mm



Floor Brush (L)
Size: 50(w) x 220(L) x 50(H)mm



Floor Brush (L) Yellow
Size: 70(w) x 240(L) x 60(H)mm



Floor Brush (XL) Heavy Duty
Size: 50(w) x 280(L) x 60(H)mm



Car / Train Brush
Size: 60(w) x 260(L) x 100(H)mm

M 60(W) x 150 (L) x70 (H)mm



Floor Brush cw Squeegee (2 in 1)
Size: 90(w) x 260(L) x 50(H)mm



Multipurpose Broom
Size: 40(w) x 280(L) x 70(H)mm



Grouting Brush
Size: 200(L) x 30(H)mm



Flixi Clamp
Size: 190(w) x 190(L) mm



Table Dustpan
Size: 220(w) x 300(L) mm



Coco Brush
Size: 80(w) x 130(L) mm



Toilet Bowl Brush - Angle
Size: 430(L)mm



Italy Toilet Bowl Brush - Round
Size: 440(L)mm



Toilet Bowl Brush - Oval
Size: 440(L)mm



Toilet Bowl Brush cw Cover
Size: 470(L)mm



Toilet Pump
Size: 420(L)mm



Nano Magic Foam
Size: 70(W) x 100 (L)mm



Sponge cw Scrubbing Pad
Size: 70(W) x 100 (L) x 30 (H)mm



Yellow Sponge
Size: 90(W) x 180 (L) x 50 (H)mm



Hand Brush
Size: 60(W) x 140 (L) x 80 (H)mm



Hand Scrubbing Pad
Size: 90(W) x 150 (L) x 30 (H)mm



Cobweb Brush
Size: 220(W) x 330 (L)mm



Ceiling Broom (Round Shape)
Size: 190(W) x 190 (H)mm



Nylon Duster

Size: 590(L)mm



Flexible Microfibre Duster

Size: 570(L)mm



Window Scraper

Size: 110(W) x 210(L)mm



Pocket Scraper

Size: 50(W) x 120(L)mm



2" Metal Scraper

Size: 50(W) x 190(L)mm



3" Stainless Steel Scraper

Size: 80(W) x 200(L)mm



16" Floor Squeegee Small (2828)

Size: 450(W) x 60 (H)mm



16" Floor Squeegee Big (2830)

Size: 460(W) x 140 (H)mm



Floor Squeegee Rubber

Size: 16" 440 (W) x 50(H)mm
24" 610 (W) x 50(H)mm



Dustpan

Size: 280(W) x 220 (L) x 120 (H)mm



Self-Closing Dustpan

Size: 270(W) x 970 (L)mm



Pencakar Rumput Plastik

Size: 400(W) x 350 (H)mm



Pencakar Rumput Besi

Size: 360(W) x 380 (H)mm



Heavy Duty Outdoor Broom

Size: 360(W) x 310 (H)mm



Vietnam Paddy Broom (Big)

Size: 350(W) x 1000 (H)mm



Fish Tail Lidi Broom

Size: 350(W) x 910(H)mm



Lidi Broom

Size: 900 (L)mm



Bandaraya Lidi Broom

Size: 1900 (L)mm



Straw Hat

Size: 500(W) x 220 (H)mm



30m Thick Water Hose

Size: 390(W) x 160 (H)mm



30m Heavy Duty Water Hose

Size: 390(W) x 120 (H)mm



Thinner 2.5kg



Hand Pump Dispenser - 5L

Size: 680 (L)mm



Gayung

Size: 300 (L) x 100 (H)mm



Liquid Funnel

3" / 5"



Hose Clip

Size: 25 (W) x 10 (H)mm



10" Leaf Cutter

Size: 490(L)mm



Penyepit Arang

Size: 470(L)mm



Tongs

Size: 340(L)mm



4 Step 10 Step
5 Step 11 Step
6 Step 12 Step
7 Step 14 Step
8 Step 16 Step
9 Step

Aluminium Ladder



24" Parang Knife



100cm Metal Pickup Tools



2.5 Aluminium Deck Scope



17" (Rubbermaid) Bonnet Pad



Doodlebug Frame
Size: 230(W) x 95(L)mm



Doodlebug Refill
Size: 245(W) x 120(L)mm



Twin Roller Mechanical Sweeper (Rubbermaid)
Size: 280(W) x 240(L) x 1150 (H)mm

SPRAY BOTTLE



2 Litre Pressure Spray



500ml Spray Bottle - China



500ml Spray Bottle - (Italy)



500ml Spray Bottle (Italy) - Heavy Duty



500ml Spray Bottle (Germany)



1L Empty Bottle



500ml Hand Pump Bottle



1L Hand Pump Bottle



18 Litre Chemical Sprayer

WINDOW CLEANING EQUIPMENT



14" Window Washer



14" Window Washer Refill



14" Window Squeegee



14" Window Squeegee Rubber Refill



10" Plastic Squeegee



10" 3 In 1 Window Washer



10" A Shape Window Washer



Window Cleaning Kit



2.5ft Wooden Handle



4ft Wooden Handle



6ft Wooden Handle



2.5ft Metal Handle



4ft Metal Handle



6ft Metal Handle



Handle Holder (5 Hole)



Tools Belt



4ft Aluminium Handle



5ft Aluminium Handle



5ft Stainless Steel Handle



Telescopic Aluminium Handle

Size:
2×1.25m
3×2m
3×3m

TISSUE PRODUCTS



Toilet Roll Tissue
- Recycle



Toilet Roll Tissue
- Pulp



Jumbo Roll Tissue
- Pulp



Interfold Tissue
- Pulp



M-Fold Tissue
- Pulp



Hand Roll Tissue
- Pulp



Center Pull Tissue
- Pulp



Facial Tissue
- Pulp



Hygiene Bath Tissue
- Pulp

GARBAGE BAGS



Packing & Size :

S	47cm X 54cm (1bdl / 200pkt X 30 pcs) -blue
S	47cm X 54cm (1bdl / 200pkt X 30 pcs) -transparent
M	56cm X 86cm (1bdl / 150 pkt X 30 pcs) - black
L	74cm X 90cm (1bdl / 180 pkt X 10 pcs) - black
L	74cm X 79cm (1bdl / 180 pkt X 10 pcs) - black (Thick)
L	74cm X 90cm (1bdl / 180 pkt X 10 pcs) (Yellow, Green, Blue, White - Special Order)
XL	32" x 40" (1bdl/30pkt x + - 10 pcs) -black (Thick)
XL	32" x 40" (1bdl/30pkt x + - 10 pcs) (Thick) (Yellow, Green, Blue, White - Special Order)
XL	35" x 40" (1bdl/30pkt x + - 10 pcs)- black (Thick)
XL	35" x 40" (1bdl/5pkt x 100 pcs)- black
XL	35" x 40" (1bdl/5pkt x 100 pcs)- transparent white
XXL	36" x 48" (1bdl/15pkt x 20 pcs) (for 120L bin use)
XXXL	50" x 52" (1bdl/25pkt x + 10 pcs) (for 240L bin use)

DISPOSABLE PRODUCTS



3 ply Disposable Face Mask



3 ply Disposable Face Mask - Tie On



Disposable Medical Gloves



Disposable Nitrile Gloves



Disposable Plastic Glove



Disposable Hair Net



Disposable Shoe Cover



Disposable Apron



PVC Leather Apron



3M Face Mask N95



Mouth Protector



Wrapping Tape -4"/20"

HAND GLOVE & RUBBER BOOTS



Nitrile Gloves



Rubber Hand Gloves - Yellow



Rubber Hand Gloves - Black



Thin Cotton Hand Gloves



Thick Cotton Hand Gloves



Rubber Boots

MOPPING BUCKET & JANITORIAL CARTS



1 Gallon Pail
Size : 200 (D)
x 160 (H)mm



2 Gallon Pail
Size : 250 (D)
x 250 (H)mm



3 Gallon Pail
Size : 290 (D)
x 255 (H)mm



4 Gallon Mop Pail c/w Cover
Size : 320 (D) X 310 (H)mm



5 Gallon Mop Pail c/w Cover
Size : 340(D) x 340(H)mm



Single Mop Bucket - 32L (Side Press)
Size : 500 (L) x 370 (W) x 720 (H)mm



Italy Single Mop Bucket - 22L (Down Press)
Size : 396 (L) x 312 (W) x 750 (H)mm



Tools Container
Size : 385 (L) x 335 (W) x 170 (H)mm



Double Mop Bucket - (Metal Frame)
Size : 860 (L) x 415 (W)
x 830 (H) mm



Double Mop Bucket - (Plastic Frame)
Size : 670 (L) x 360 (W)
x 835 (H)mm



Double Mop Bucket - (Plastic Frame) - Heavy Duty
Size: 790 (L) x 450 (W)
X 865 (H) mm



Single Mop Bucket c/w Extra Bucket - 32L
Size: 800 (L) x 460 (W)
X 960 (H) mm



Jannitor Cart c/w Cover
Size: 1130 (L) 515 (W)
x 975 (H)mm



Black Body Jannitor Cart c/w Cover
Size: 1300 (L) 550 (W)
x 1000 (H)mm



Janitor Cart Yellow Bag
Size: 250 (L) x 350 (W) x 780 (H)mm



Janitor Cart Black Bag



Janitor Cart c/w Double Bucket
Size: 1300 (L) x 550 (W)
X 1000 (H) mm

Come With Extra Bucket For Reference:



Full Cover Janitor Cart c/w Double Bucket
Size : 1300 (L) X 550 (W) x 1350 (H)mm



Side Press Wringer
Size : 260 (L) x 240 (W) x 378 (H)mm



Down Press Wringer
Size : 385 (L) x 249 (W) x 510 (H)mm

BUCKET & TROLLEY



Maid Trolley w/o Door
Size : 1540 (L) x 540 (W)
x 1285 (H)mm



Maid Trolley cw Door
Size : 1540 (L) x 540 (W)
x 1285 (H)mm



X-Cart Trolley
Size : 710 (L) 660 (W)
x 950 (H)mm



X-Cart Trolley Yellow Bag
Size : 480 (L) 540 (W)
x 690 (H)mm



3 Tier Utilities Cart c/w Buckets
Size : 1300 (L) x 500 (W)
x 960 (H)mm



3 Tier Utilities Cart c/w Buckets (Black Body)
Size : 1395 (L) x 525 (W)
x 940 (H)mm



3 Tier Utilities Cart c/w Buckets & 3 Side Cover (Black Body)
Size : 1395 (L) x 525 (W)
x 940 (H)mm



Restaurant Cart c/w Buckets
Size : 850 (L) 430 (W)
x 960 (H)mm



Collection Tray For 3 Tiers Utilities Cart
Size : 450 (L) 315 (W)
x 150 (H)mm



Cutlery Tray
Size : 520 (L) 305 (W)
x 103 (H)mm



10L Bucket
Size : 320 (L) 220(W)
x 240 (H)mm



Window Bucket
Size : 510 (L) 250 (W)
x 340 (H)mm



Dual Bucket
Size : 455 (L) 330 (W)
x 280 (H)mm

UMBRELLA STAND



Umbrella Lock Stand cw 18 Head Lock
Size : 590 (L) 448 (W) x 873 (H)mm



Stainless Steel Umbrella Stand
Size : 625 (L) 310 (W) x 470 (H)mm



Stainless Steel Umbrella Bag Wrapping Stand - Double
Size : 490 (L) 290(W) x 760 (H)mm



Umbrella Bin
Size : 325 (L) 325(W)
x 785 (H)mm

STAINLESS STEEL HOUSE KEEPING & LUGGAGE TROLLEY



Stainless Steel X-2 Trolley
Size : 630 (L) 600 (W) x 1030 (H)mm



Stainless Steel Dirty Linen Trolley
Size : 840 (L) 460 (W) x 840 (H)mm



Stainless Steel Services Linen Trolley c/w Handle
Size : 1200 (L) x 650 (W) x 970 (H)mm



Stainless Steel Platform Trolley
Size : 900 (L)x 560 (W) x 940 (H)mm



Stainless Steel Maid Trolley
Size : 1360 (L)x 460 (W) x 1080 (H)mm



Powder Coated Maid Trolley c/w Door
Size : 1400 (L)x 460 (W) x 1200 (H)mm



Powder Coated Maid Trolley c/w Door & Multi-Function Bag
Size : 1400 (L)x 500 (W) x 1230 (H)mm



Powder Coated Services Trolley - Single Side
Size : 860 (L)x 460 (W) x 1055 (H)mm



Stainless Steel Luggage Stand
Size : 590 (L)x 600 (W) x 780 (H)mm



Stainless Steel 2 Tiers Restaurant Trolley
Size : 950 (L)x 500 (W) x 900 (H)mm



Stainless Steel 3 Tiers Restaurant Trolley
Size : 950 (L)x 500 (W) x 900 (H)mm



Heavy Duty Platform Trolley
300kg : 890 (L)x 590 (W) x 860 (H)mm
500kg : 1090 (L) x 700 (W) x 870 (H)mm



Stainless Steel Luggage Hand Truck Trolley
Size : 750 (L)x 505 (W) x 1200 (H)mm



Stainless Steel Luggage Birdcage Trolley
Size : 1050 (L)x 610 (W) x 1860 (H)mm



Stainless Steel Luggage Birdcage Trolley (Gold)
Size : 1060 (L)x 610 (W) x 1880 (H)mm

WHEEL & 4 WHEEL MOBILE GARBAGE BIN



Mobile Garbage Bin

120L-460 (W) x 550 (L) x 940 (H)mm
240L-590 (W) x 730 (L) x 1007(H)mm
360L-730 (W) x 850 (L) x 1140 (H)mm



Mobile Garbage Bin 660L

1340 (W) x 805 (L) x 1260 (H)mm



Mobile Garbage Bin 1100L

1340 (W) x 1030 (L) x 1330 (H)mm



Mobile Garbage Bin With Foot Pedal

120L- 476(W) x 555(L)x 957(H)mm
240 - 575(W) x 730(L) x 1130 (H)mm



Mobile Garbage Bin With Foot Pedal 120L (Dark Grey)

120L- 476(W) x 555(L)x 957(H)mm



Mobile Garbage Bin

Colour : Yellow, Blue, Brown, Orange

120L- 476(W) x 550(L)x 940 (H)mm
240L - 590 (W) x 730 (L) x 1007 (H)mm



Mobile Garbage Bin 660L

Colour : Yellow, Blue, Brown, Orange

1340(W) x 805 (L)x 1260 (H)mm

RECYCLE MOBILE GARBAGE BIN



Recycle Mobile Garbage Bin (3 in 1)

Unit Size:
120- 460 (W) x 550 (L) x 940 (H)mm
240-590 (W) x 730 (L) x 1007 (H)mm



Recycle Mobile Garbage Bin 660L (3 in 1)

Unit Size: 1340 (W) x 805 (L) x 1260 (H)mm



Recycle Mobile Garbage Bin With Foot Pedal

Unit Size:
120L - 476(W) x 555 (L) x 957 (H)mm
240L - 575 (W) x 730 (L) x 1130 (H)mm



Recycle Pedal Bin 68L (4 in 1) cw Wheel

Unit Size: 20L - 490(W) x 480 (L) x 620 (H)mm



Recycle Pedal Bin 68L (3 in 1) cw Wheel

Unit Size: 20L - 490(W) x 480 (L) x 620 (H)mm



Black Body Recycle Mobile Garbage Bin

Unit Size:
100L- 480 (W) x 530 (L) x 810 (H)mm
240L - 580 (W) x 740 (L) x 1060 (H)mm

METAL LEACH BIN & PE BIN CW METAL FRAME



Rear View



Metal Leach Bin 1100L

1700 (W) x 1330 (L) x 1170 (H)mm

Metal Leach Bin 1500L

2100 (W) x 1315 (L) x 1190 (H)mm



PE Leach Bin cw Metal Frame 1100L

1670 (W) x 1450 (L) x 960 (H)mm

BIOHAZARD BIN



Biohazard Garbage Bin
120L- 460 (W) x 550 (L) x 940 (H)mm
120L- 590 (W) x 730 (L) x 1007 (H)mm



Biohazard Garbage Bin 660L
1340 (W) x 805 (L) x 1260 (H)mm



Biohazard Sharp Bin
Size:
5L: 230 (D) x 230 (H)mm
10L: 270 (D) x 290 (H)mm
20L: 320 (D) x 380 (H)mm



Biohazard Pedal Bin 10L
280 (W) x 325 (L) x 350 (H)mm



Biohazard Pedal Bin 18L
290 (W) x 350 (L) x 390 (H)mm



Biohazard Pedal Bin 30L
290 (W) x 360 (L) x 530 (H)mm



Biohazard Pedal Bin 40L
290 (W) x 360 (L) x 705 (H)mm

STAINLESS STEEL PEDAL BIN & ROOM BIN



Size :
5L : 205(D) X 285(H)mm
8L : 225(D) x 335(H)mm
12L : 248(D) x 395(H)mm
20L : 290(D) x 460(H)mm

Stainless Steel Pedal Bin



Double Layer Room Bin
225 (W) x 265 (H)mm

**Option: Stainless Steel Outer
Powder Coated Outer**



Fire Resistance Room Bin
275 (W) x 210 (L) x 315 (H)mm



Room Bin - Grey
280 (W) x 300(H)mm



**Paper Bin
(Random Colour)**
320 (W) x 315(H)mm



Metal Paper Bin - Round
S Size - 235 (D) x 270 (H)mm
L Size - 293 (D) x 340 (H)mm



Metal Paper Bin - Square
S Size - 218 (W) x 218 (L) x 270(H)mm
L Size - 260 (W) x 260 (L) x 300(H)mm

STAINLESS STEEL WASTE BIN



Stainless Steel Round Bin c/w Ashtray Top
250 (D) x 610(H)mm
Code: SS 108



Powder Coated Round Bin c/w Ashtray Top
250 (D) x 610(H)mm
Code: SS 108-B



Electroplated Round Bin c/w Ashtray Top
250 (D) x 610(H)mm
Code: SS 108-G



Stainless Steel Round Bin c/w Ashtray Top
250 (D) x 760(H)mm
Code: SS 109



Stainless Steel Round Bin c/w Open Top
380 (D) x 760(H)mm
Code: SS 107



Powder Coated Round Bin c/w Open Top
380 (D) x 760(H)mm
Code: SS 107-B



Powder Steel Round Bin c/w Flip Top
380 (D) x 760(H)mm
Code: SS 106



Powder Coated Round Bin c/w Flip Top
380 (D) x 760(H)mm
Code: SS 106-B



Stainless Steel Round Bin c/w Flip Top
480 (D) x 760(H)mm
Code: SS 116



Stainless Steel Semi Round Bin c/w Open Top
457 (W) x 227(D) x 760 (H)mm
Code: SS 103



Stainless Steel Semi Round Bin c/w 2/3 Flat Top
457 (W) x 227(D) x 760 (H)mm
Code: SS 104



Stainless Steel Semi Round Bin c/w 2/3 Open & 1/3 Ashtray Top
457 (W) x 227(D) x 760 (H)mm
Code: SS 105



Stainless Steel Rectangular Bin c/w Flat Top
400 (W) x 300(D) x 760 (H)mm
Code: SS 111



Stainless Steel Rectangular Bin c/w Ashtray Top
400 (W) x 300(D) x 760 (H)mm
Code: SS 111-AT



Stainless Steel Rectangular Bin c/w Open Top
400 (W) x 300(D) x 760 (H)mm
Code: SS 111-OT



Stainless Steel Rectangular Bin c/w 3/5 Open & 2/5 Ashtray Top
400 (W) x 300(D) x 760 (H)mm
Code: SS 111-OA



Stainless Steel Rectangular Bin c/w Flip Top
380 (W) x 230(D) x 750(H)mm
Code: SS 102



Powder Coated Rectangular Bin c/w Flip Top
380 (W) x 230(D) x 750(H)mm
Code: SS 102 (BLK)



Stainless Steel Rectangular Bin c/w Open Top
380 (W) x 230(D) x 750(H)mm
Code: SS 102-OT



Stainless Steel Square Bin c/w Open Top
260 (W) x 260(D) x 760(H)mm
Code: SS 110



Stainless Steel Round Bin c/w Open Top
260 (D) x 600 (H)mm
Code: SS 112



Stainless Steel Round Bin c/w Open Top
250 (D) x 760 (H)mm
Code: SS 112 -H



Stainless Steel Round Bin c/w Flip Top
300 (D) x 610 (H)mm
Code: SS 116



Stainless Steel Square Bin c/w Ashtray Top
240 (W) x 240 (D) x 610(H)mm
Code: SS 118



Stainless Steel Square Bin c/w Ashtray Top
240 (W) x 240 (D) x 760(H)mm
Code: SS 119



Black Bullet Bin c/w Open Top
390 (D) x 780 (H)mm
Code: SS 401



Stainless Steel Round Bin c/w Dome Top
390 (D) x 760 (H)mm
Code: SS 107-DT



Stainless Steel Round Bin c/w 1/2 Open & 1/2 Ashtray Top
390 (D) x 760 (H)mm
Code: SS 107-OA

WOOD BIN



Powder Coated + Wood Bin Round cw Ashtray
400 (D) x 775(H)mm
Code: SSW01



Powder Coated + Wood Bin Round cw Ashtray & 2 Holes
400 (D) x 930(H)mm
Code: SSW02



Powder Coated + Wood Bin Square cw Ashtray & 4 Holes
350 (W) x 350(L) x 810 (H)mm
Code: SSW41



Powder Coated + Wood Bin Square cw Dome Ashtray & 4 Holes
400 (W) x 400 (L) x 950 (H)mm
Code: SSW42

STAINLESS STEEL RECYCLE BIN



**Stainless Steel Recycle Bin - Triangle
2 in 1**

800 (W) x 400(D) x 800 (H)mm



**Stainless Steel Recycle Bin - Triangle
3 in 1**

1200 (W) x 400(D) x 800 (H)mm



**Stainless Steel Recycle Bin - Triangle
4 in 1**

1600 (W) x 400(D) x 800 (H)mm



**Stainless Steel Recycle Bin - Round
2 in 1**

760 (W) x 380(D) x 800 (H)mm



**Stainless Steel Recycle Bin - Round
3 in 1**

1140 (W) x 380(D) x 800 (H)mm



**Stainless Steel Recycle Bin - Round
4 in 1**

1520 (W) x 380(D) x 800 (H)mm



**Stainless Steel Recycle Bin - Flat
2 in 1**

760 (W) x 415(D) x 800 (H)mm



**Stainless Steel Recycle Bin - Flat
3 in 1**

1140 (W) x 415(D) x 800 (H)mm



Recycle Bin Sticker - A4 Size

STAINLESS STEEL RECYCLE BIN 2 IN 1



**Stainless Steel Semi
Round Bin c/w Open Top**

Unit size: 457 (W) x 227 (D) x 760 (H)mm
Code: SS 103 (2 in 1)



**Stainless Steel Semi
Bin c/w Open Top**

Unit size: 260 (W) x 260 (D) x 760 (H)mm
Code: SS 110 (2 in 1)



**Stainless Steel Rectangular
Bin c/w Open Top**

Unit size: 380 (W) x 230 (D) x 750 (H)mm
Code: SS 102-OT (2 in 1)



**Stainless Steel Rectangular
Bin c/w Open Top**

Unit size: 400 (W) x 300 (D) x 760 (H)mm
Code: SS 111-OT (2 in 1)



**Stainless Steel Round
Bin c/w Open Top**

Unit size: 380 (D) x 760 (H)mm
Code: SS 107 (2 in 1)



**Powder Coated Round
Bin c/w Open Top**

Unit size: 380 (D) x 760 (H)mm
Code: SS 107-B (2 in 1)

STAINLESS STEEL RECYCLE BIN 3 IN 1



Stainless Steel Semi Round Bin c/w Open Top

Unit Size: 457 (W) x 227 (D) x 760 (H)mm
Code: SS 103 (3 in 1)



Stainless Steel Square Bin c/w Open Top

Unit Size: 260 (W) x 260 (D) x 760 (H)mm
Code: SS 110 (3 in 1)



Stainless Steel Rectangular Bin c/w Open Top

Unit Size: 380 (W) x 230 (D) x 750 (H)mm
Code: SS 102-OT (3 in 1)



Stainless Steel Rectangular Bin c/w Open Top

Unit Size: 400 (W) x 300 (D) x 760 (H)mm
Code: SS 111-OT (3 in 1)



Stainless Steel Round Bin c/w Open Top

Unit Size: 380 (D) x 760 (H)mm
Code: SS 107 (3 in 1)



Powder Coated Round Bin c/w Open Top

Unit Size: 380 (D) x 760 (H)mm
Code: SS 107-B (3 in 1)

STAINLESS STEEL RECYCLE BIN 4 IN 1



Stainless Steel Semi Round Bin c/w Open Top

Unit Size: 457 (W) x 227 (D) x 760 (H)mm
Code: SS 103 (4 in 1)



Stainless Steel Square Round Bin c/w Open Top

Unit Size: 260 (W) x 260 (D) x 760 (H)mm
Code: SS 110 (4 in 1)



Stainless Steel Rectangular Bin c/w Open Top

Unit Size: 380 (W) x 230 (D) x 750 (H)mm
Code: SS 102-OT (4 in 1)



Stainless Steel Rectangular Bin c/w Open Top

Unit Size: 400 (W) x 300 (D) x 760(H)mm
Code: SS 111-OT (4 in 1)



Stainless Steel Round Bin c/w Open Top

Unit Size: 380 (D) x 760(H)mm
Code: SS 107 (4 in 1)



Powder Coated Round Bin c/w Open Top

Unit Size: 380 (D) x 760(H)mm
Code: SS 107-B (4 in 1)

SUNNY BIN & PLASTIC PEDAL BIN



PE Sunny Bin 80L
Colour: Blue, Red, Black
510(D) x 720(H)mm



PE Sunny Bin 120L
Colour: Blue, Red, Black
615(D) x 720(H)mm



PE Sunny Bin 80L c/w Dome Top
Colour: Green, Black, Blue, Red
510(D) x 950(H)mm



PE Sunny Bin 45L
460(D) x 510(H)mm



Sunny 64
460(D) x 630(H)mm



Sunny 80
460(D) x 810(H)mm



Plastic Round Pedal Bin
Colour: Green, Blue, Yellow, Red
Size:
15L - 300(D) x 315(H)mm
30L - 330(D) x 400(H)mm
45L - 415(D) x 540(H)mm



Step On Bin
45L - 410(W) x 400(L) x 620 (H)mm
68L - 500(W) x 420(L) x 650 (H)mm

FIBERGLASS BIN & PE BIN



Glaze 250
600(D) x 900(H)mm



City 80
335(W) x 335 (L)
x 785 (H)mm



Disguise 120
600(W) x 600 (L)
x 1325 (H)mm



Disguise FD 120
600(W) x 600 (L)
x 1325 (H)mm



Type S 120
485(W) x 485 (L)
x 1040 (H)mm



Type R 120
485(W) x 485 (L)
x 1040 (H)mm



Moon 45
450 (W) x 225 (L)
x 730 (H)mm



Blue Sea 45
450 (W) x 225 (L)
x 730 (H)mm



Ice 45
450 (W) x 225 (L)
x 730 (H)mm



Montana 150
585 (D) x 1145 (H)mm



Gora 120
660 (D) x 1015 (H)mm



Honey 85
620 (D) x 760 (H)mm



Leo 85
630 (D) x 1000 (H)mm



Island 60
440 (D) x 830 (H)mm



KK 85
440 (D) x 1000(H)mm



Flip 60
380 (W) x 380 (L)
x 800 (H)mm



Flip 120
480 (W) x 480 (L)
x 1000 (H)mm



Pulau 16
255 (W) x 255 (L)
x 560 (H)mm



Pulau 50
380 (W) x 380 (L)
x 790 (H)mm



Pulau 120
510 (W) x 510 (L)
x 1040 (H)mm

FIBERGLASS BIN & PE BIN



Pulau FD16
255(W) x 255 (L)
x 560 (H)mm



Pulau FD 50
380(W) x 380 (L)
x 790 (H)mm



Pulau FD 120
510 (W) x 510 (L)
x 1040 (H)mm



Roof 50
380 (W) x 380 (L)
x 810 (H)mm



Roof 120
495 (W) x 495 (L)
x 1030 (H)mm



Saharan 90
610 (D) x 1065 (H)mm



Spring 75
510 (D) x 1060 (H)mm



Spring 150
635 (D) x 1140(H)mm



Summer 150
620 (D) x 930(H)mm



EVO 16
255 (D) x 610(H)mm



Taurus 100
455 (D) x 1000(H)mm



Virgo 80
430 (D) x 1080(H)mm



Virgo 150
580 (D) x 1110(H)mm



Camelia 30
370 (W) x 256 (L) x 560 (H)mm
Option: Hanging Pole



Forest 40
510 (W) x 305 (L) x 765 (H)mm
Option: Hanging Pole



Happy 28
330 (W) x 230 (L)
x 500 (H)mm
Option: Hanging Pole



Post 42
350 (W) x 240 (L)
x 705 (H)mm
Option: Hanging Pole



Winter 85
450 (D) x 1010 (H)mm



Mountain 80
360 (W) x 350 (L) 790(H)mm
c/w Stainless Steel Cover



Mountain FC 80
360 (W) x 360 (L) 825(H)mm
c/w Fiberglass Cover



Energy AT 50
350 (D) x 800 (H)mm



Energy AT 100
400 (D) x 1000(H)mm



Energy FT 50
350 (D) x 800(H)mm



Energy FT 100
400 (D) x 1000(H)mm



Energy OT 50
350 (D) x 800(H)mm



Energy OT 100
400 (D) x 1000(H)mm



Initial FT 120
500 (W) x 360(L) x 800 (H)mm



Initial OT 120
500 (W) x 360(L) x 800 (H)mm

PLASTIC RECYCLE BIN 2 IN 1



Energy FT 50 Recycle Bin 2 in 1

Unit Size : 350 (D) x 800 (H)mm



Energy OT 50 Recycle Bin 2 in 1

Unit Size : 350 (D) x 800 (H)mm



Pulau 50 Recycle Bin 2 in 1

Unit Size : 380 (W) x 380 (L) x 790 (H) mm



Pulau FD 50 Recycle Bin 2 in 1

Unit Size : 380 (W) x 380 (L) x 790 (H) mm

Energy FT 100 Recycle Bin 2 in 1

Unit Size : 400 (D) x 1000 (H)mm

Energy OT 100 Recycle Bin 2 in 1

Unit Size : 400 (D) x 1000 (H)mm

Pulau 120 Recycle Bin 2 in 1

Unit Size : 510 (W) x 510 (L) x 1040 (H)mm

Pulau FD 120 Recycle Bin 2 in 1

Unit Size : 510 (W) x 510 (L) x 1040 (H)mm



Flip 60 Recycle Bin 2 in 1

Unit Size : 380 (W) x 380 (L) x 800 (H) mm



Initial FT 120 Recycle Bin 2 in 1

Unit Size : 500 (W) x 360 (L) x 800 (H) mm



Mountain FC 80 Recycle Bin 2 in 1

Unit Size : 360 (W) x 360 (L) x 825 (H) mm



Joint FRP Recycle Bin 2 in 1

Unit Size : 780 (W) x 400 (L) x 800 (H) mm

Flip 120 Recycle Bin 2 in 1

Unit Size : 510 (W) x 510 (L) x 1040 (H)mm

PLASTIC RECYCLE BIN 3 IN 1



**Energy FT 50 Recycle Bin
3 in 1**

Unit Size : 350 (D) x 800 (H)mm



**Energy OT 50 Recycle Bin
3 in 1**

Unit Size : 350 (D) x 800 (H)mm



**Pulau 50 Recycle Bin
3 in 1**

Unit Size : 380 (W) x 380 (L)
x790 (H)mm



**Pulau FD 50 Recycle Bin
3 in 1**

Unit Size : 380 (W) x 380 (L)
x790 (H)mm

**Energy FT 100 Recycle Bin
3 in 1**

Unit Size : 400 (D) x 1000 (H)mm

**Energy OT 100 Recycle Bin
3 in 1**

Unit Size : 400 (D) x 1000 (H)mm

**Pulau 120 Recycle Bin
3 in 1**

Unit Size : 510 (W) x 510 (L) x
1040 (H)mm

**Pulau FD 120 Recycle Bin
3 in 1**

Unit Size : 510 (W) x 510 (L) x
1040 (H)mm



**Flip 60 Recycle Bin
3 in 1**

Unit Size : 380 (W) x 380 (L)
x800 (H)mm



**Initial FT 120 Recycle Bin
3 in 1**

Unit Size : 500 (W) x 360 (L)
x800 (H)mm



**Mountain FC 80 Recycle Bin
3 in 1**

Unit Size : 360 (W) x 360 (L)
x825 (H)mm



**Joint FRP Recycle Bin
3 in 1**

1180 (W) x 400 (L) x 800 (H)mm

**Flip 120 Recycle Bin
3 in 1**

Unit Size : 480 (W) x 480 (L) x
1000 (H)mm

PLASTIC RECYCLE BIN 4 IN 1



**Energy FT 50 Recycle Bin
4 in 1**

Unit Size : 350 (D) x 600 (H)mm

**Energy FT 100 Recycle Bin
4 in 1**

Unit Size : 400 (D) x 1000 (H)mm

**Joint FRP Recycle Bin
4 in 1**

1180(W) x 400 (D) x 800 (H)mm



**Energy OT 50 Recycle Bin
4 in 1**

Unit Size : 350 (D) x 800 (H)mm

**Energy OT 100 Recycle Bin
4 in 1**

Unit Size : 400 (D) x 1000 (H)mm



**Pulau 50 Recycle Bin
4 in 1**

Unit Size : 380 (W) x 380 (L)
x790 (H)mm

**Pulau 120 Recycle Bin
3 in 1**

Unit Size : 510 (W) x 510 (L) x
1040 (H)mm



**Pulau FD 50 Recycle Bin
4 in 1**

Unit Size : 380 (W) x 380 (L)
x790 (H)mm

**Pulau 120 Recycle Bin
4 in 1**

Unit Size : 510 (W) x 510 (L) x
1040 (H)mm



**Flip 60 Recycle Bin
4 in 1**

Unit Size : 380 (W) x 380 (L)
x 800 (H)mm

**Flip 120 Recycle Bin
4 in 1**

Unit Size : 480 (W) x 480 (L) x
1000(H)mm



**Initial FT 120 Recycle Bin
4 in 1**

Unit Size : 500 (W) x 360 (L)
x 800 (H)mm



**Mountain FC 80 Recycle Bin
4 in 1**

Unit Size : 360 (W) x 360 (L)
x 825 (H)mm



**Joint FRP Recycle Bin
4 in 1**

1580 (W) x 400 (L) x 800 (H)mm

STAIRCASE HAND TROLLEY



Grocery Staircase Hand Trolley
350 (W) x 490 (L) x 1050 (H)mm



Heavy Duty Staircase Hand Trolley
420 (W) x 570 (L) x 1100 (H)mm



Giant Staircase Hand Trolley
480 (W) x 770 (L) x 1400 (H)mm





Contact Us



+603-6187 6866



+6012-649 4786



enquiry@sghygiene.com.my



1-23A , First Floor, Sky Awani Commercial,
Jalan Sentul Pasar, Sentul Pasar,
51100 Kuala Lumpur, Malaysia

